

Property Committee Report



- Our journey so far
- What we've learned
- Our vision for the future
- How we get there

History



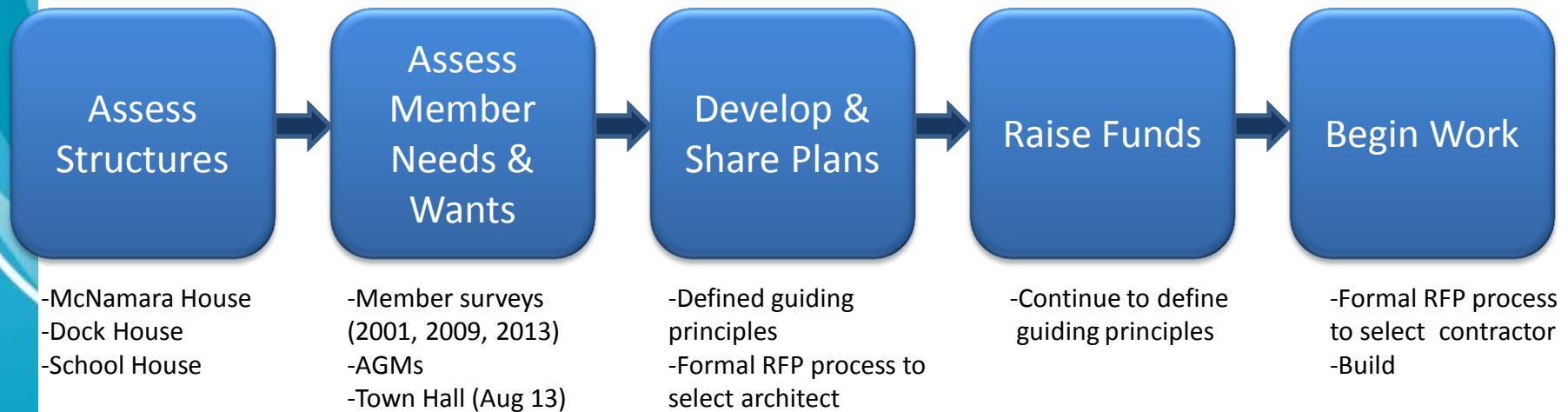
- 1980's
 - School House
 - Docks
- 2000's
 - Champlain Marina
 - Dock House
 - McNamara House
 - Brand property



For a total of 9.7 acres



Our Journey at a High Level



September 2008

March 2016

What We've Learned



Structural Assessments

- Proportionately high % of SSCA budget is supporting property maintenance
- School house remains viable
- Dockhouse remains viable for modest 'pass through' use in medium term. Mechanics are deteriorating

Member Needs & Wants

- 71% support a new structure
- Permanent, enclosed vs temporary
- Large enough to accommodate 150 seated, 250+ standing/casual
 - Over 150 have attend events (e.g. pot lucks, Ribfest)
 - Members project 13% growth in cottage *population/usage* over next 15 years
- Modular enough to accommodate smaller activities

SSCA Board Recommendation: Remove McNamara House and build community center that can accommodate over 250

Top Activities/Uses Appealing to Our Members



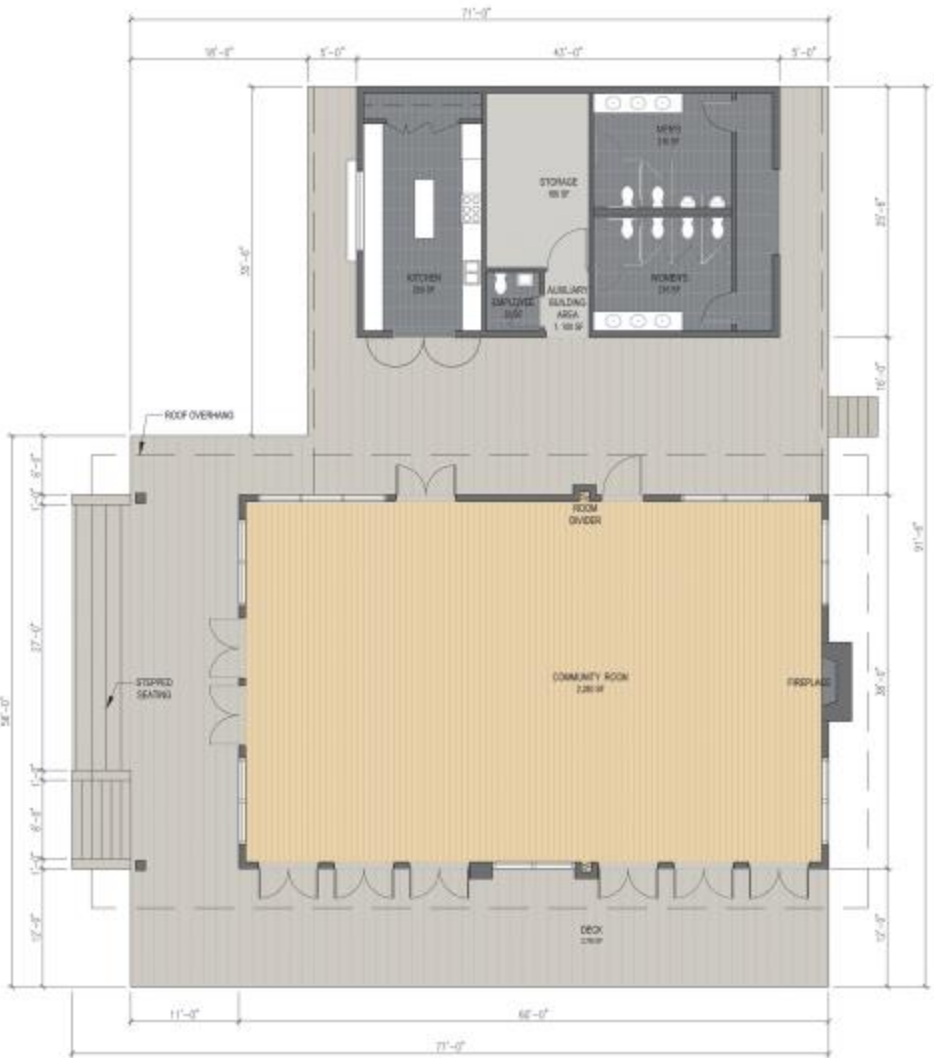


Design Principles

- Longevity – will serve our community for generations
 - Durable design & materials
 - Flexibility to serve diverse needs and interests
 - Capacity for growth - 150 seated, 250+ standing
- Multi-purpose
 - Large open area for full membership events
 - Flexibility to create privacy for smaller activities
 - Kitchen & washroom facilities
 - Storage space
- Low maintenance – design & materials
- Environmentally friendly – from design through to materials & maintenance
- Aesthetically consistent with our cottage environment

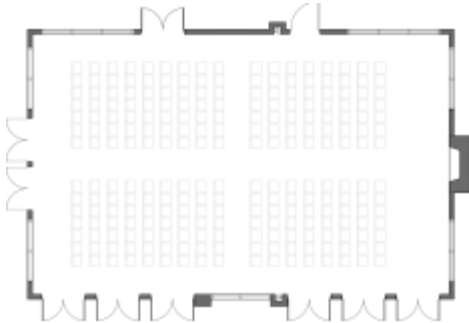


Our Vision: SSCA 2065

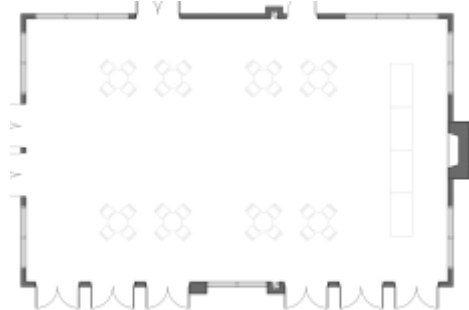


TOTAL BUILDING AREA: 3,381 SF

FLOOR PLAN
SCALE: 1/8"=1'-0"



NON-FIXED SEATS
236 OCCUPANTS

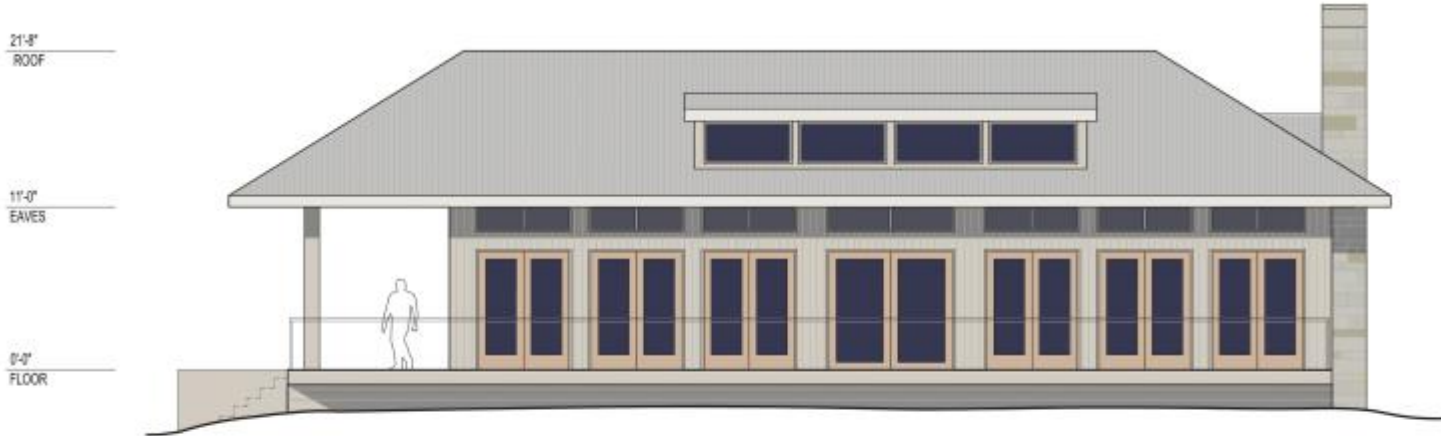


COCKTAIL/STANDING
300 OCCUPANTS

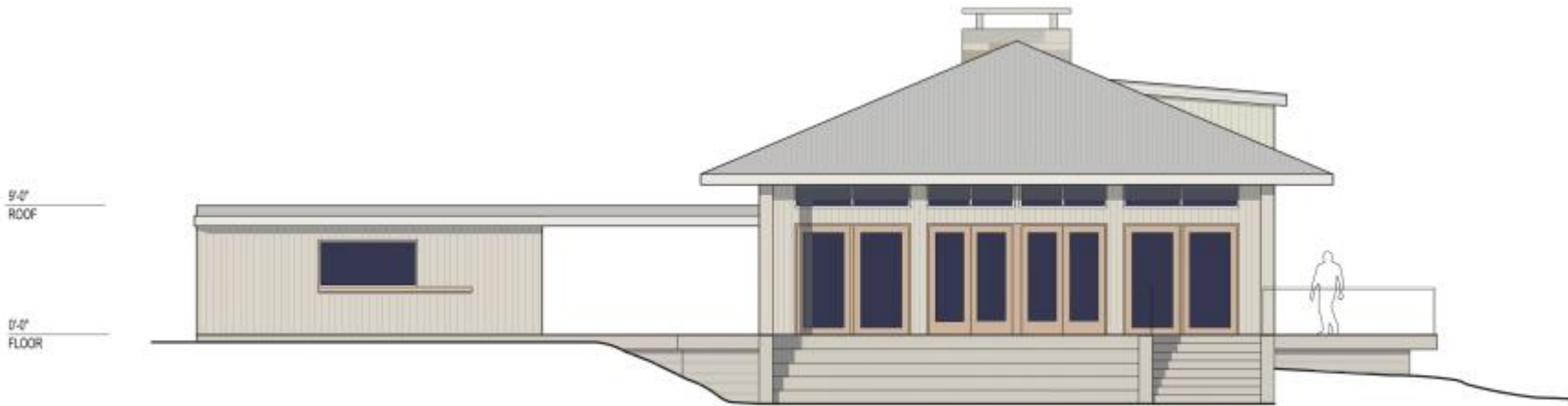


NON-FIXED SEATS AND TABLES
152 OCCUPANTS

Our Vision: SSCA 2065



EAST ELEVATION



SOUTH ELEVATION

SCALE: 1/8"=1'-0"



Benefits

- Social
 - Our property is central to a vibrant cottage community
 - Nearly 60% participate in Regatta*, Over 50% participate in pot lucks*
 - Space to support our growing events
 - 120 people at the July Potluck, 160 people at the Tennis Event , 2012 Rib-fest well over 200 people
 - A venue to host public/private functions i.e. AGM, parties, weddings
- Financial
 - Maintenance costs will be reduced (recall they are currently 35% of total SSCA budget)
 - Savings can fund other SSCA initiatives to drive community engagement
 - Without SSCA 2065, membership dues would have to increase to cover the escalating costs of maintaining/ retrofitting existing structures

“The benefits to us of being able to connect with the Sans Souci Community at the SSCA property cannot be overstated – keep up the great work!”

- 2013 Member Survey Respondent

How You Can Help



- SSCA property has grown entirely through commitment & generosity of members
- Fundraising approach for SSCA 2065
 - Appeal to members interested in leaving a legacy for future generations
 - In keeping with our commitment to inclusivity, seeking broad membership participation vs relying on a few substantial donors (i.e. it takes a community to build a community centre)
 - Funds will cover design, construction and maintenance of new structure without impacting members' annual dues
 - Modest % of funds raised will be held in trust to guarantee scheduled maintenance of the structure
 - There may be opportunities to dovetail upgrades to other structures (primarily School House) during construction of the new hall

Fundraising Goal:
\$1 million Committed by AGM 2015

Ways to Give



- One-time contribution
 - Cash
 - Investment securities
- Scheduled contributions over three years
 - Annually
 - Monthly
- Building Materials
 - Contact a committee member if you have materials that might be of use

Campaign Guiding Principles



- Campaign will run until AGM 2015
- Donors will sign commitment form and have 3 years to fulfill their commitment
- New structure will include a modest but clear site where we will recognize every donor

Next Steps



- Sign donor commitment form
 - Simple equation:
Your donation = success for 2065
- Advocate for SSCA 2065 with family and friends
- Get involved by joining a committee
 - Fundraising
 - Solicit corporate and foundation donations
 - Administration